

New in Artlandia® SymmetryWorks® 4

Professional pattern design software for all industries

Artlandia SymmetryWorks is an Adobe® Illustrator® plug-in that lets you easily create professional-quality pattern designs based on any type of symmetry. The plug-in is used worldwide by surface, textile, carpet, apparel, sportswear, footwear, fashion, book, stencil, glass, greeting card, web, print, product, and other designers, interior decorators, stationery developers, illustrators, sculptors, publishers, quilt makers, craftsmen, fine artists, creators of advertising, sales, and marketing materials, and other creative professionals, students, and teachers.

Starting from its original version, released in 2001, the plug-in creates patterns of all seventeen mathematically possible symmetry types with the click of a mouse. The resulting pattern is hot-linked to the seed (motif). When you edit the seed, the plug-in automatically updates the entire pattern. This is the key feature that makes working with SymmetryWorks so productive and fun.

Since Version 2, which added replicas, layouts, and export capabilities, SymmetryWorks has become a comprehensive pattern design CAD system. Just by selecting a layout from a list, you can create even the most complicated patterns, whose repeat size, orientation, and other properties precisely fit your specifications. With a click of a button, you can export your pattern to a web browser or textile CAD system, where your pattern will seamlessly tile the surface.

Starting with Version 3, the plug-in supports both vector and raster objects and lets you combine vector and raster elements in one pattern, even images with different resolutions. GIF, TIFF, JPEG, PNG, Photoshop, and other images are fully supported and can be edited in your favorite image editor and then automatically updated inside a SymmetryWorks pattern. Also fully supported are mesh and type objects, compound paths, clipping masks, brushes, and other types of objects.

SymmetryWorks 4 builds on this foundation and greatly expands what you can do with replicas, one of the most popular and powerful features of the plug-in. Replicas (live copies) are indispensable for creating both simple and complex patterns. They offer new ways of quickly adding repetition to patterns and enhancing harmony and balance in your designs. Interactively move, scale, rotate, and mirror replicas and the transformed replica art updates automatically as you edit your seed elements.

In SymmetryWorks 4, you can create replicas from either the entire motif or selected elements. Add or remove elements from a replica at any time. Keep an element hidden for future editing and still show it in replicas. Overlap several layouts and quickly make all-over or tossed repeats. Spawn multiple replica copies (multi-replicas) and automatically apply a transformation to instantly produce spirals, pinwheels, gradations, and other arrangements of objects within your patterns—or the entire new classes of eccentrics, guilloché patterns, or optical, moiré, and other effects. Apply live effects to replica art for even greater flexibility or to easily create sophisticated pattern designs.



This brochure provides a brief overview of the new features in SymmetryWorks 4 and outlines the pricing and system requirements. For more information, please visit the Artlandia web site www.artlandia.com/SymmetryWorks.

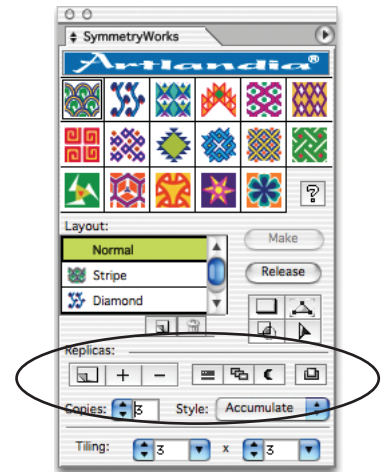
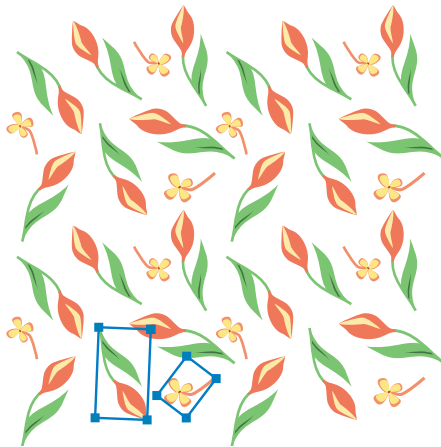
Artlandia SymmetryWorks is the most powerful, versatile, and easy-to-use pattern design software on the market.

New in Artlandia SymmetryWorks 4

- Replicas (live copies) of selected objects
- Addition and removal of objects from replicas
- Enhanced support for all-over and tossed repeats
- New multi-replica feature for automatic generation of replica copies
- Editable spirals, mosaics, gradations, and other arrangements in patterns
- Automatically generated check patterns, eccentrics, guilloché backgrounds, and other linework
- New capabilities for creating optical, moiré, and other special effects
- Rotational designs (pinwheels) of any order
- Support for applying live effects to replica art
- Replicas of hidden objects for creating counterchanged designs and sophisticated effects
- Combination layouts

Replicas of Selected Elements

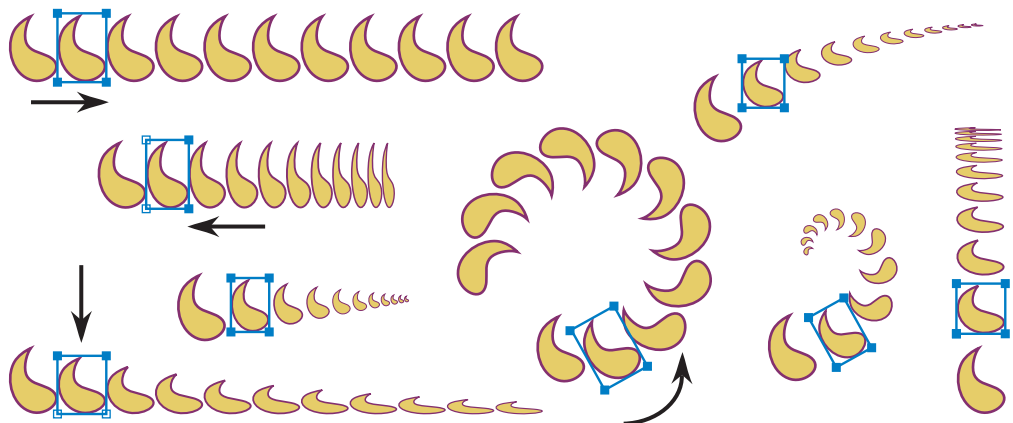
The new Replicas section in the SymmetryWorks 4 palette provides controls for most new features. The New Replica button  (which used to create a replica of the entire seed in earlier versions) now creates a replica of the selected group of objects in the seed. You can still make a replica of the entire seed by holding down the Alt key (Windows) or the Option key (Mac OS) and clicking the New Replica button . To add or remove objects from already created replicas, use the Add To Replica + and Remove from Replica - buttons. Hold down the Alt key or the Option key to add or remove objects from all replicas at once. The selective use of seed objects in replicas will immediately change the way you work on all your designs, and it is simply indispensable for creating all-over designs and tossed repeats. In the past, these types of designs often required multi-layer pattern arrangements. Now you can easily create them within one SymmetryWorks pattern.



Easily create tossed and all-over repeats with SymmetryWorks 4. Your pattern can contain replicas of any seed objects.

Multi-replicas

Automatic generation of multiple replica copies (multi-replicas) in SymmetryWorks 4 lets you quickly create spirals, mosaics, gradations, and other arrangements of objects within your patterns. To control a multi-replica, the plug-in gives you a handle with which you move, rotate, reflect, and scale the replica art, the same way you work with usual replica handles. You simply specify the number of replica copies and the plug-in automatically duplicates the replica art and applies your transformation over and over again to instantly spawn replicas according to your recipe. This simple and intuitive feature brings out a cornucopia of solutions and lets you quickly produce a variety of new classes of patterns.



The new multi-replica feature lets you quickly spawn multiple replica copies that remain hot-linked to your seed objects. When you edit the seed, all replica art updates automatically.

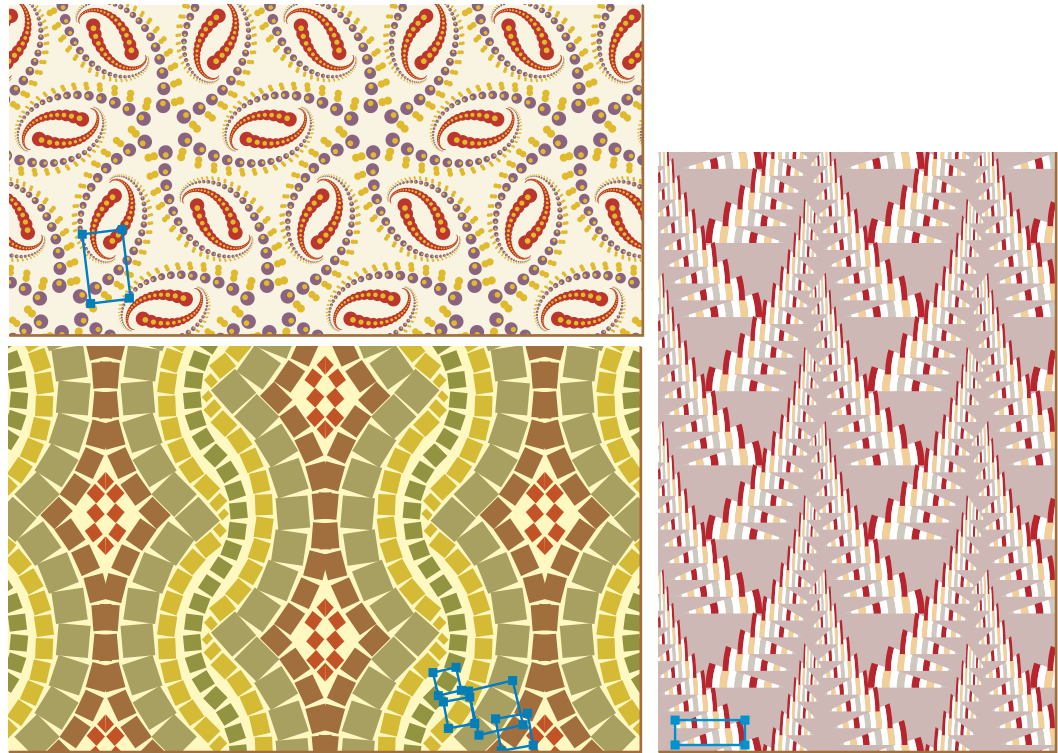
Spirals, Mosaics, Gradations...

Depending on the type of arrangement you want to achieve, you can apply different transformations to a replica handle. For example, to distribute replica copies uniformly, simply shift the handle in the desired direction. The plug-in will similarly shift all other replica copies in the multi-replica.

The recipe to create a vertical or horizontal gradation is thus very simple: create a new multi-replica, set an appropriate number of copies in the SymmetryWorks palette, and shift the handle vertically or horizontally. Similarly, to arrange your objects in a spiral, simply scale and slightly rotate the handle of your multi-replica. To distribute replica copies along an arc, apply a rotation and a shift, and so on.



You can quickly create spirals, mosaics, and arbitrary gradations by applying a transformation to multi-replica handles. This saves you hours of painstaking efforts of distributing objects manually (and repeating the work every time you edit the original objects).

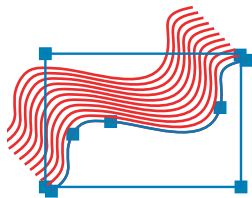
The top and right designs are generated by a single multi-replica. The mosaic design uses separate multi-replicas, one for each colored square.




Checks, Eccentrics, Guilloché Backgrounds, Linework, and Other Line Designs

Another immediately useful applications of multi-replica is creating repeating patterns from lines. Typically, you will draw a very few lines (or even a single line) and let multi-replicas and symmetry do the rest.

For instance, in SymmetryWorks 4, the Pinwheel symmetry  (or Mirror & glide  and others) produce interesting check patterns from just a few seed lines with the help of multi-replicas. You can distort the lines, for example, using the warp tool, to make curved checks. As usual with SymmetryWorks, you can quickly create a simple pattern and then edit the seed elements live to produce and instantly preview the effect you want.

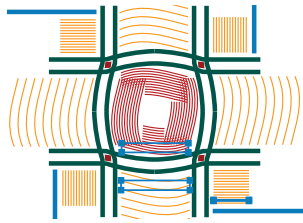


Multi-replicas are convenient for creating line designs.

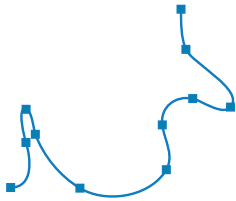
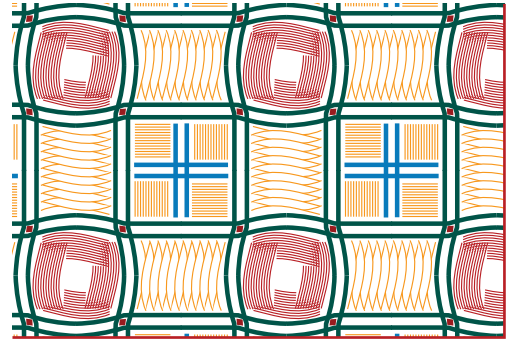
Guilloché backgrounds are especially easy to create since they can often be generated from a single curve. Multi-replicas and symmetry operations do the required interlacing. The Double mirror symmetry  and others usually work well for this type of pattern. Again, you will find it convenient to quickly create a pattern and then experiment by interactively editing the curve, moving the multi-replica handle around (usually without rotation or scaling), and experimenting with the number of replica copies in the multi-replica.



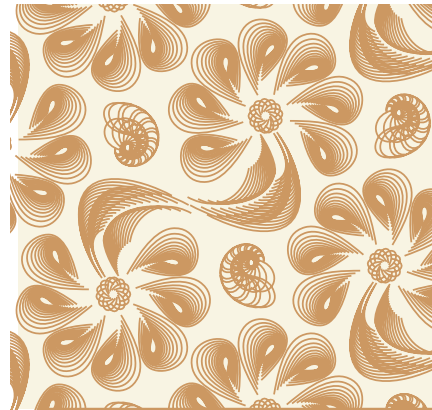
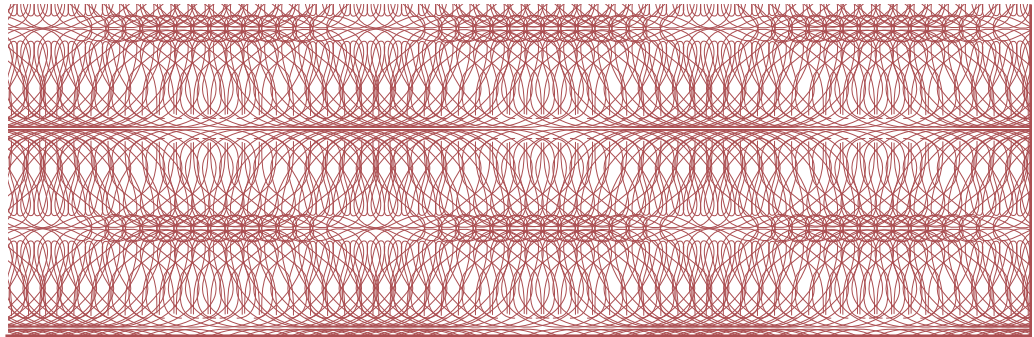
Just a few seed lines create a check pattern in SymmetryWorks 4.



The tile is produced by the Pinwheel symmetry with the help of three multi-replicas, one for the red line and one each for two orange lines.



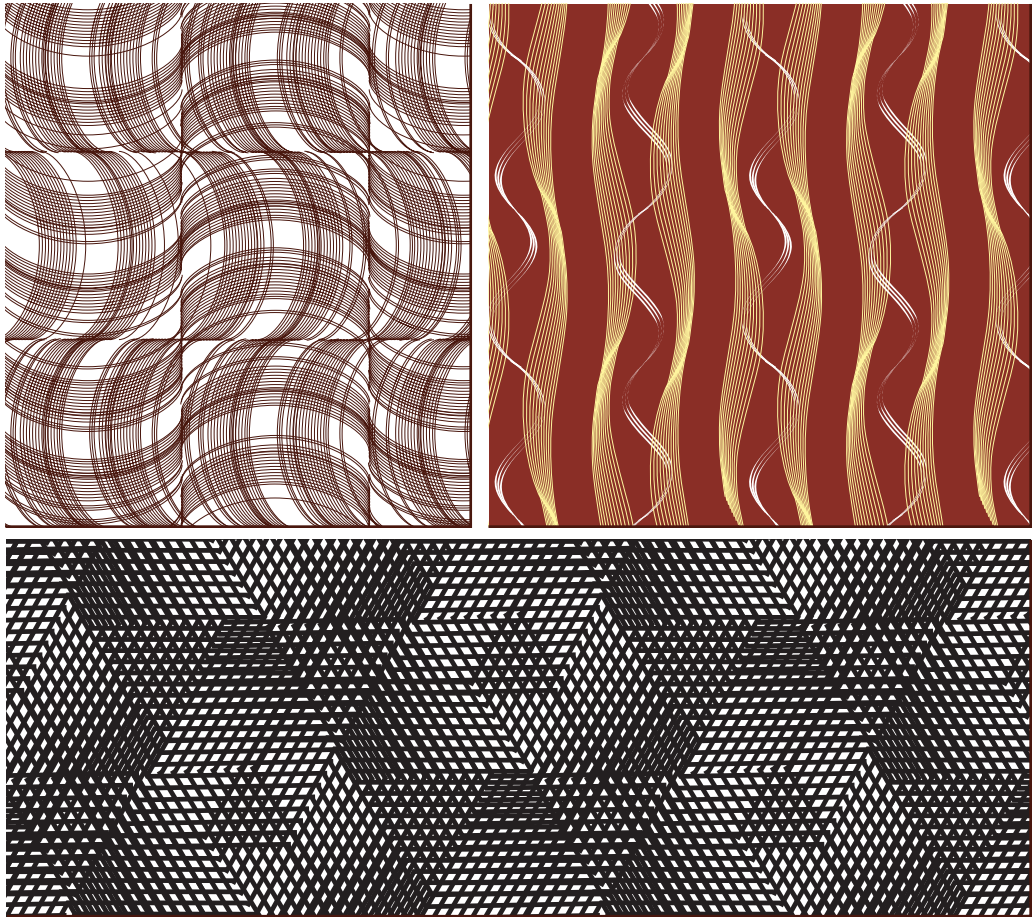
A single curve, repeated thirteen times with a multi-replica (shifted sideways), produces a guilloché background for a certificate.



With rotation and scaling, multi-replicas generate eccentrics and linework.

Optical, Moiré, and Other Special Effects

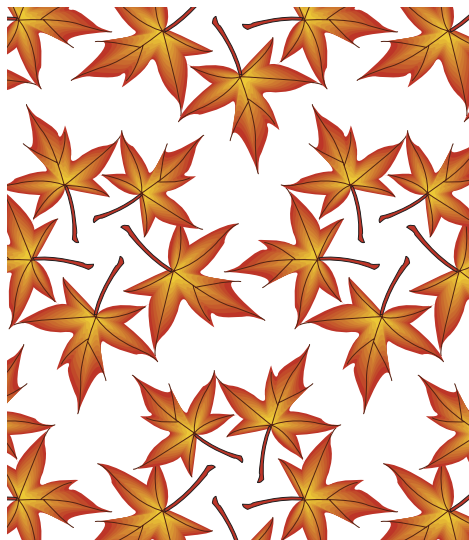
Multi-replicas also greatly help in creating illusions of volume, movement, and other optical effects, such as moiré. Many optical effects are based on repetition, progression, and other changes generated by geometric transformations. These are easily created with multi-replicas, which save you a great deal of manual repetitive work and let you have fun experimenting with pattern designs that you would have never tackle with any other software.




Optical effects produced with multi-replicas in SymmetryWorks 4.

Rotational Designs and Rotational Elements in Composite Repeats

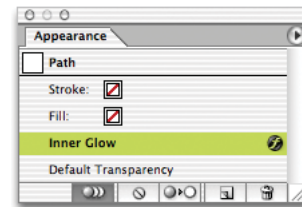
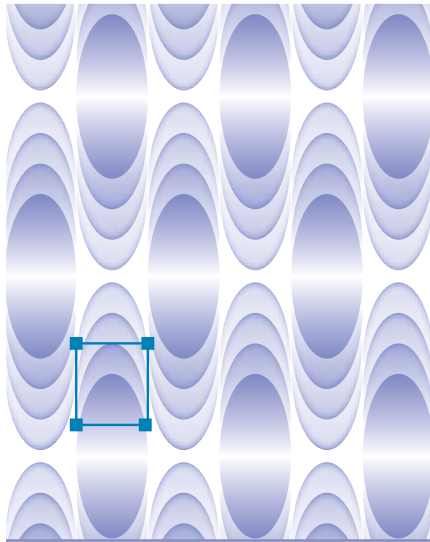
You could always create 2-, 3-, 4-, and 6-fold rotational designs in SymmetryWorks simply by using the corresponding symmetries. Multi-replicas provide you with an alternative way, which is much more flexible in that it allows you to create rotational elements of any order and combine them with any other symmetry in a composite repeat.



Five-fold rotational symmetry created with a multi-replica combined with the Glide reflection symmetry .

Applying Live Effects to Replica Art

In previous versions of SymmetryWorks, effects applied to a replica handle were just that, a means to alter the appearance of the handle itself. In the new version, you can still do that, but you also have an option to pass the effect on to the replica art. In multi-replicas, you can go a step further and choose to accumulate effects as the plug-in builds sequential copies of replica art for you. So that the effects get applied once to the first replica copy, twice to the second copy, three times to the third, and so on. This lets you emphasize objects with some effects (for example, Drop Shadow), gradually vanish objects with other effects (for example, Feather), multiply replica copies further and create “clouds” or “meteoric showers” of objects (with the Transform effect), and so on.

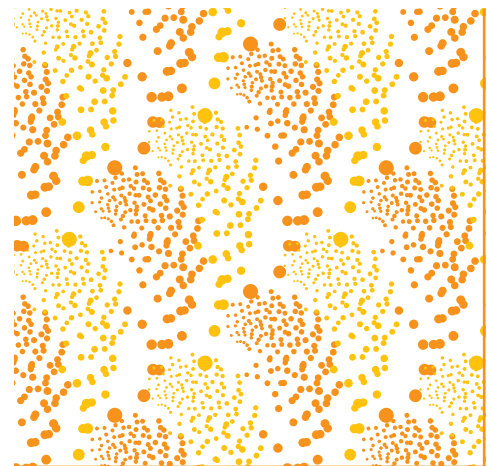
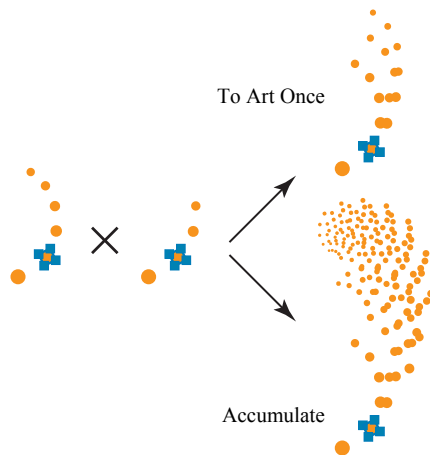


You can see and edit effects applied to your replica handles just like any other live effects

Accumulating a live effect (Inner Glow) in a triple multi-replica. Notice how the art gets progressively lighter at each of the three steps.

You can use effect accumulation in SymmetryWorks 4 to create “meteoric showers”.

In this design, the Transform effect, applied to a replica handle, produces four copies of replica art (left). Each replica is automatically duplicated in a triple multi-replica (right). If you apply the effect to replica art once, you get a “thin” track. With accumulation, you get the full “shower” track.



The option Show Hidden Art in Replicas is indispensable for creating sophisticated designs with effects applied to replica art.

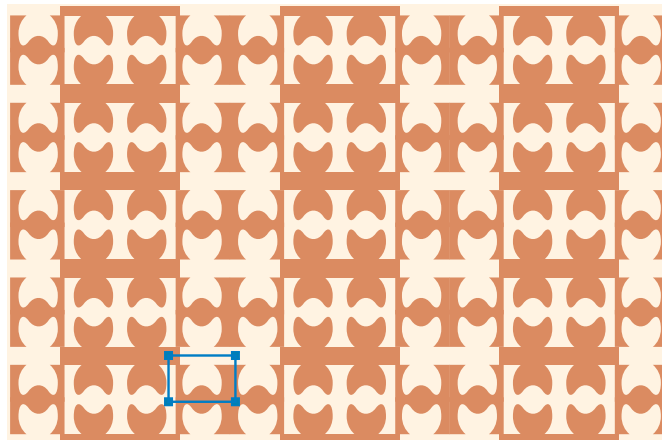
Replicas of Hidden Objects

Sometimes, when you apply effects to replica art, you will find that the original “plain” seed art (the one without effects) does not belong with the styled art in replicas. You can, of course, apply the effect directly to the seed art, but what if you want to apply different effects to different replicas? In SymmetryWorks 4, there is a simple solution: hide the (plain) seed art, but still show it in replicas where it can be styled differently by applying live effects as needed.

The same feature also comes in handy for creating counterchanged repeats where colors and shapes change places. SymmetryWorks 4 provides a simple way to interactively create and edit this type of pattern. Typically, you will arrange a replica side-by-side with the seed and apply the Pathfinder > Subtract effect to replica art to change positive to negative. To invert colors in a part of the design, you can use a base shape of the same color that is hidden in the seed, but plays its role when used with the Subtract effect in the replica.



The seed has a hidden rectangle of the same color (shown as a dashed contour), which plays its role when the Pathfinder Subtract effect is applied to the replica art.



Combination Layouts

Normally, when applying a layout from the Layout list, you want to instantly re-create the exact arrangement of replicas for that layout. There will be times, however, when you wish to retain the existing replicas and simply add new ones. In SymmetryWorks 4, you can do that by simply holding down the Shift key and clicking the layout of your choice. This lets you easily create complex replica arrangements, such as in composite overlays and other repeat types.

System Requirements

Artlandia SymmetryWorks 4 for Macintosh and Windows runs on all major operating systems and requires Adobe Illustrator 8 or later. Illustrator 10 and later versions are recommended.

Availability and Pricing

Artlandia SymmetryWorks 4 is scheduled to be released in the first quarter of 2007. The estimated street price for the downloadable version is \$229 (US) or \$419 (US) for the combined purchase with Artlandia SymmetryShop, the companion plug-in for Adobe Photoshop. The price with the Artlandia Collection is \$429 (US) or \$619 (US) for the value package with SymmetryShop. The price for upgrades to SymmetryWorks 4 from all earlier versions is \$75 (US). The software can also be purchased in the CD-ROM version with a printed user guide for \$255 (US) or \$469 (US) with SymmetryShop.

For an interactive tour of Artlandia SymmetryWorks, please visit www.artlandia.com/SymmetryWorks.

Copyright © 2007 Artlandia, Inc. All rights reserved. Artlandia, SymmetryWorks, and SymmetryShop are registered trademarks of Artlandia, Inc. Adobe, Illustrator, and Photoshop are registered trademarks of Adobe Systems Incorporated. Microsoft and Windows are either registered trademarks or trademarks of Microsoft Corp. in the United States and/or other countries. Apple, Mac, Mac OS, and Macintosh are trademarks of Apple Computer, Inc., registered in the U.S. and other countries. All other trademarks are the property of their respective owners.

Artlandia on the web: www.artlandia.com Email: info@artlandia.com